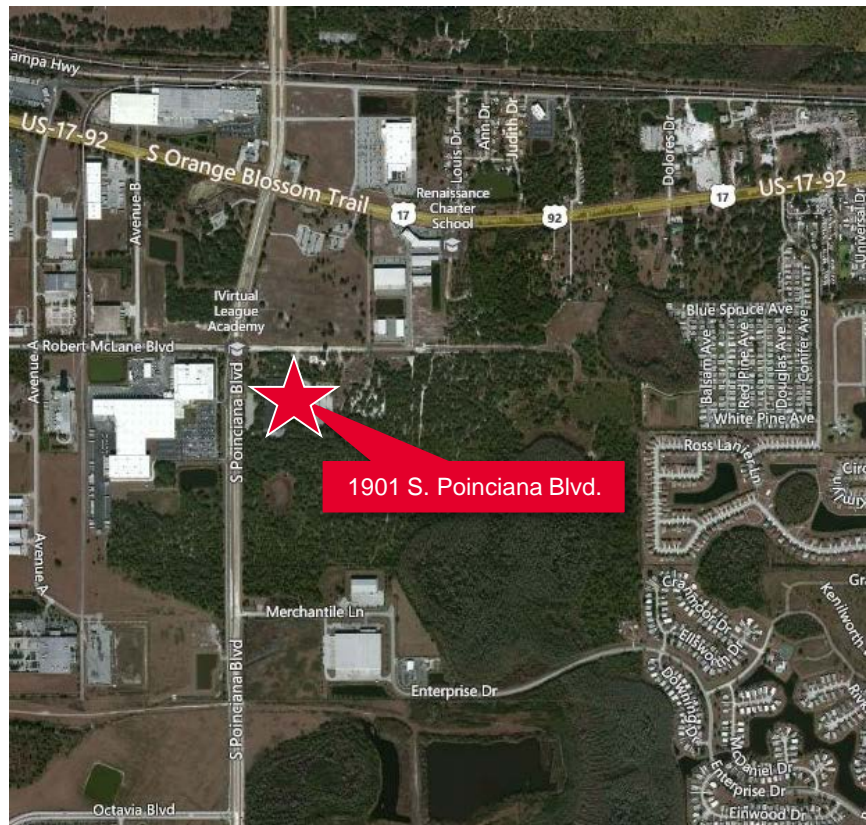


3 ACRES PAVED / SECURED OUTSIDE STORAGE

Property Highlights

Asking price	\$6,300,000
Base rent	9,420 sf - \$6.00/sf NNN 13,600+ sf - \$4.00/sf NNN includes small office construction
OPEX	\$1.40/sf
Space available	9,420 - 43,120± sf
Dock doors	None available* 1 total
Grade doors	1 available* 7 total
Clear height	12'5" - 16'4" minimum
Total building	141,235± sf
Acreage	Up to 38.05 ac
Column spacing	Varies
Fire sprinklers	Class IV
Electrical	5,200 amps / 480 volts
Power	3-phase
Zoning	PUD
Year built	1976

* More doors can be added



For more information, please contact

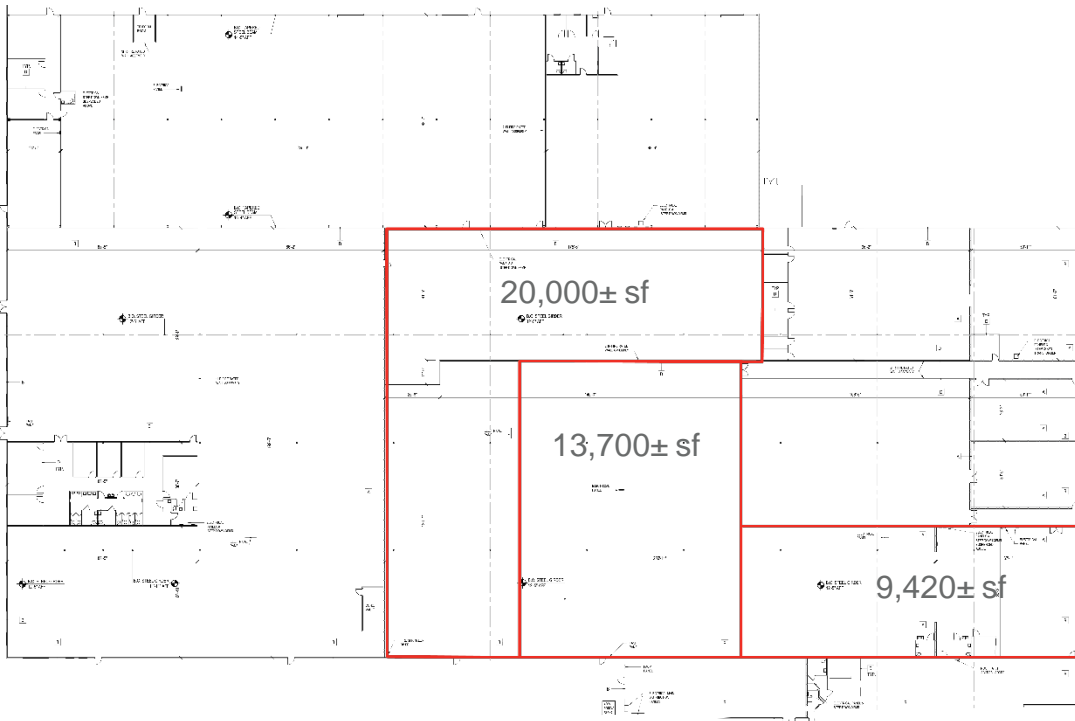
Jared Bonshire
 Director
 +1 407 541 4414
jared.bonshire@cushwake.com
David Perez
 Director
 +1 407 541 4435
david.perez@cushwake.com





 Cushman & Wakefield of Florida, Inc.
 20 North Orange Avenue, Suite 300
 Orlando, Florida 32801
 phone: +1 407 841 8000

cushmanwakefield.com

Site Overview


- 3 acres / secured outside storage
- fiber on-site

Space Plan

Drive Times

	Interstate 4	8.7 Miles 12 Minutes
	State Road 417	9.8 Miles 17 Minutes
	Florida's Turnpike	12.3 Miles 20 Minutes
	State Road 528	15.7 Miles 22 Minutes

For more information, please contact

Jared Bonshire
Director
 +1 407 541 4414
jared.bonshire@cushwake.com

David Perez
Director
 +1 407 541 4435
david.perez@cushwake.com

Cushman & Wakefield of Florida, Inc.
 20 North Orange Avenue, Suite 300
 Orlando, Florida 32801
 phone: +1 407 841 8000

cushmanwakefield.com